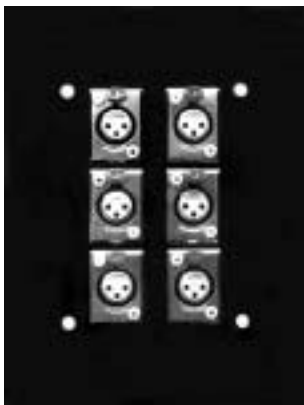


Flat Connector Panels FP601 Six Input Flat Connector Panel

Backboxes BB600 Backbox for FP601

FP601



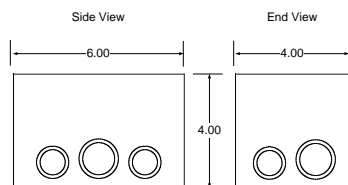
- Pre-punched panel accepts up to six (6) female Switchcraft D*F or similar connectors
- Mounts on BB600 backbox
- Rugged 14 gauge steel construction
- Color: Smooth black

Dimensions:

Panel size: 8.0" X 6.0"

connectors not included

BB600



- Heavy gauge cold rolled steel construction.
- UL listed, conforms to NEMA standards.
- Pre-tapped for mounting FP600 series Flat Connector Panels.

Dimensions:

Backbox OD: 6" x 4" x 4" (nominal). w/ 1/2" & 3/4" combination and 1" knock outs.

Specifications;

FP601 Flat Connector Panel Specification

Flat connector panel shall be constructed of 14 gauge steel. Panel shall be pre-punched to accept six (6) Switchcraft D*F style connectors. Panel shall have ceramic plastic satin black finish. Connector panel shall measure 8" x 6" and shall be pre-punched to mount on BB600 backbox.

Flat Connector Panel shall be Mystery Electronics FP601.

BB600 Backbox Specification

Backbox shall be heavy gauge cold rolled steel, shall measure 6" x 4" x 4" nominal dimension, shall be Underwriters Laboratory listed and conform to N.E.M.A. standards. Backbox shall have 10 each combination knock outs (1/2" to 1" trade size) spaced uniformly on the sides and ends. Backbox shall have disposable heavy gauge metal cover, attached with screws, for protection during installation rough-in. The cover mounting flange shall have 4 holes tapped for 8/32 screws to accommodate mounting of Mystery Electronics FP600 series connector panels. Backbox shall be coated overall with gray urethane.

Backbox shall be Mystery Electronics BB600